

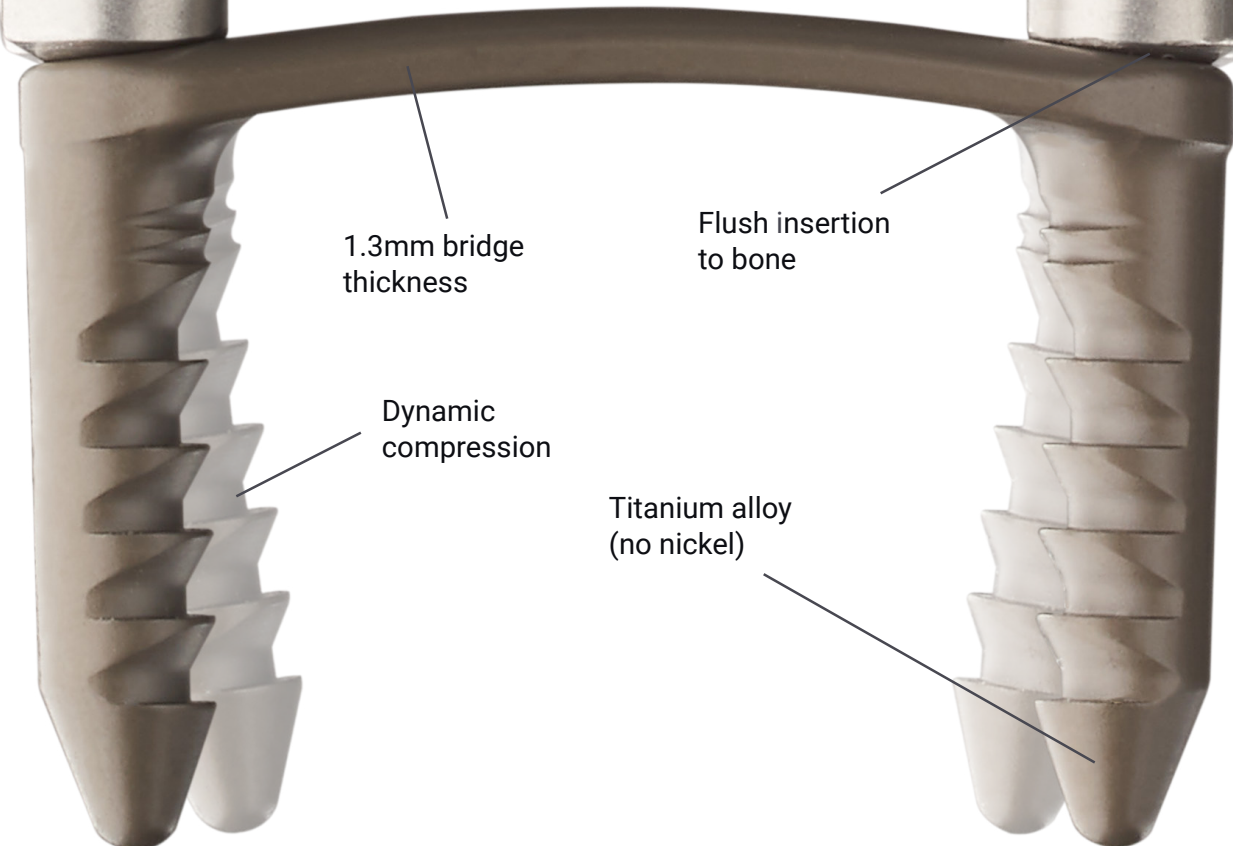


SpeedPlate™

Rapid Compression Implants

Case Examples

Fast Compression Fixation is Here...



Streamlined Insertion

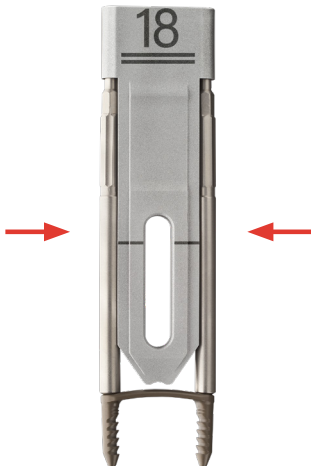
Step 1

Position & Drill



Step 2

Preload & Insert



Step 3

Release & Compress



Dynamic Compression

offers continuous compression across the fusion site

Titanium Alloy

implant does not contain nickel²

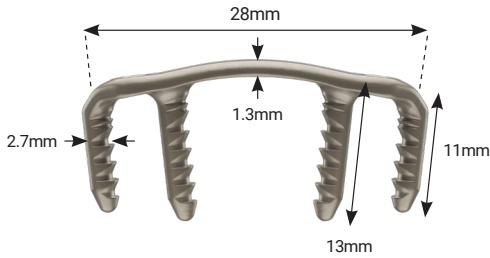
Anatomic Contour

implant shape accommodates intercuneiform joint and tibialis anterior insertion

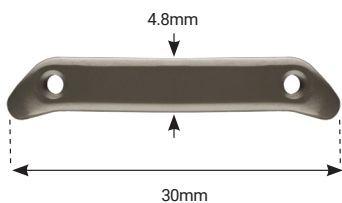
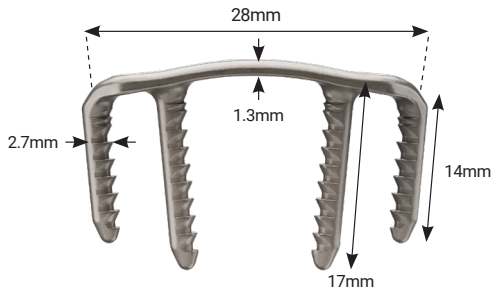


Implant Specifications

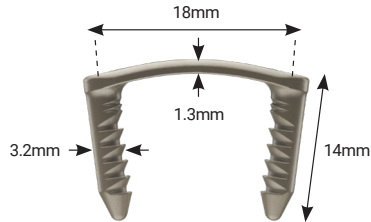
Anatomic Quad



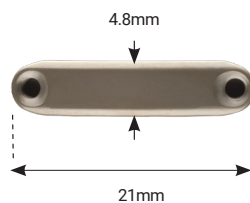
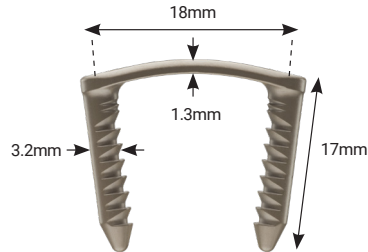
Long Tine Anatomic Quad



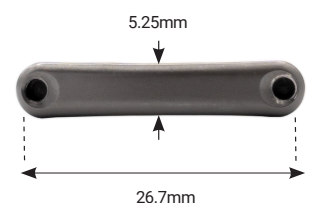
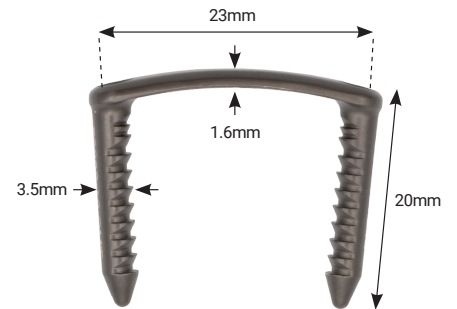
18x14mm



18x17mm



23x20mm



With Broad Versatility

Forefoot

- Transverse MT Fracture
- MTP



Midfoot

- NC Fusion
- Cotton Osteotomy
- TMTs

Hindfoot

- TN Fusion
- Evans Osteotomy
- Dwyer Osteotomy
- CC Fusion

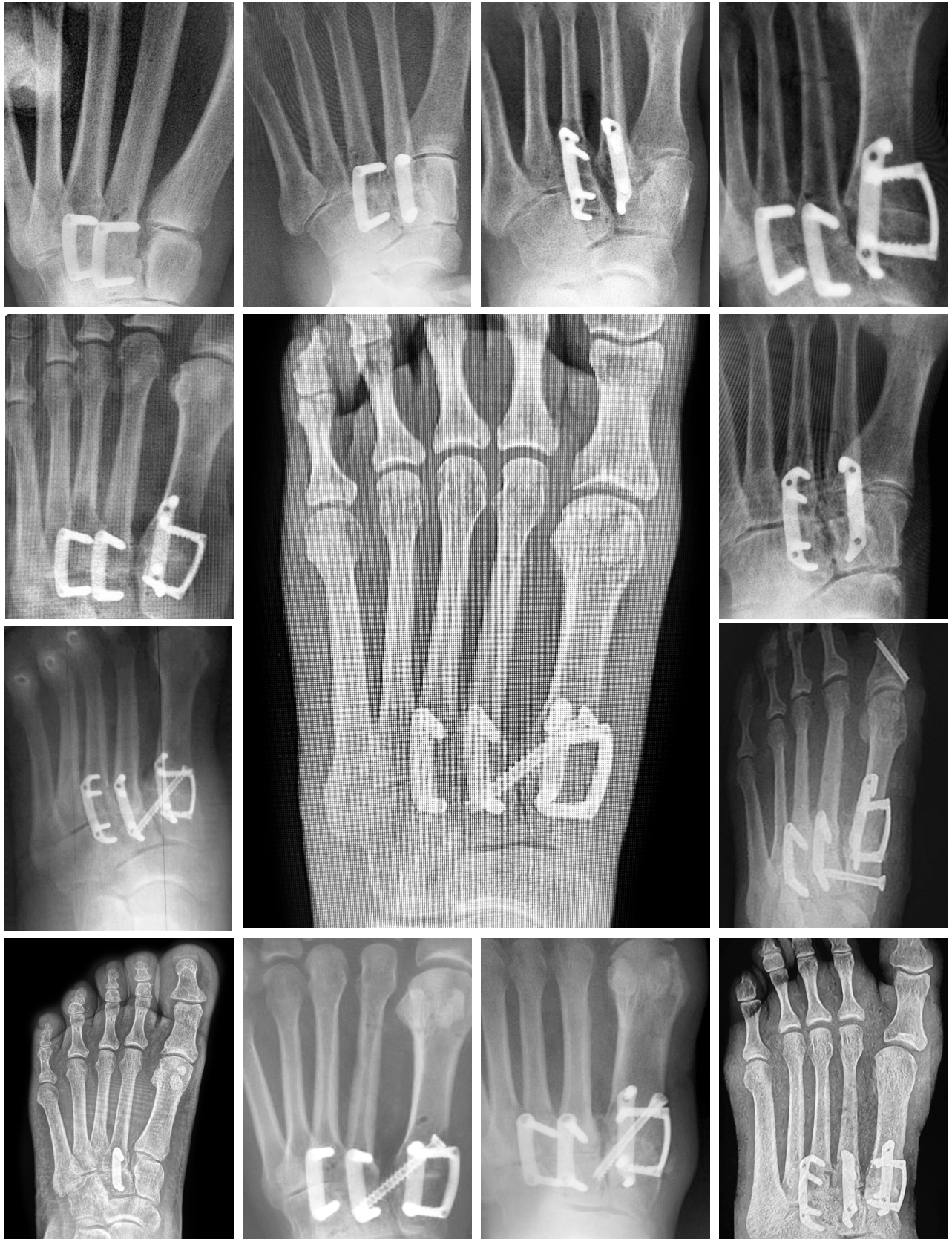
Indications for Use: The system is intended to be used for fracture fixation, osteotomy fixation, and joint arthrodesis of the foot and ankle.

The Lapiplasty® Procedure



*Constructs shown are at surgeons' discretion

The Adductoplasty® Procedure



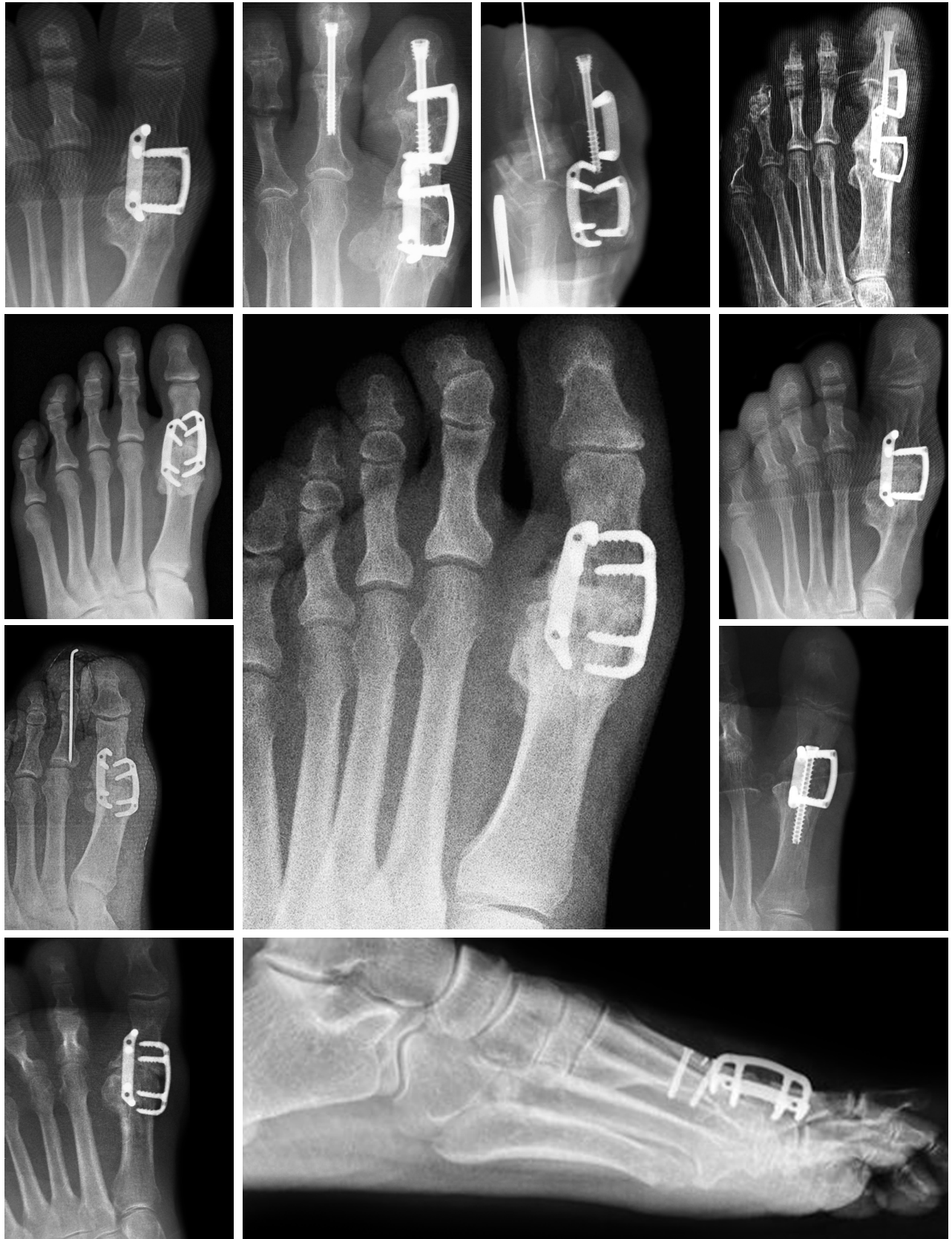
*Constructs shown are at surgeons' discretion

Doubles and Quads



*Constructs shown are at surgeons' discretion

MTP Fusion and IPJ Fusion



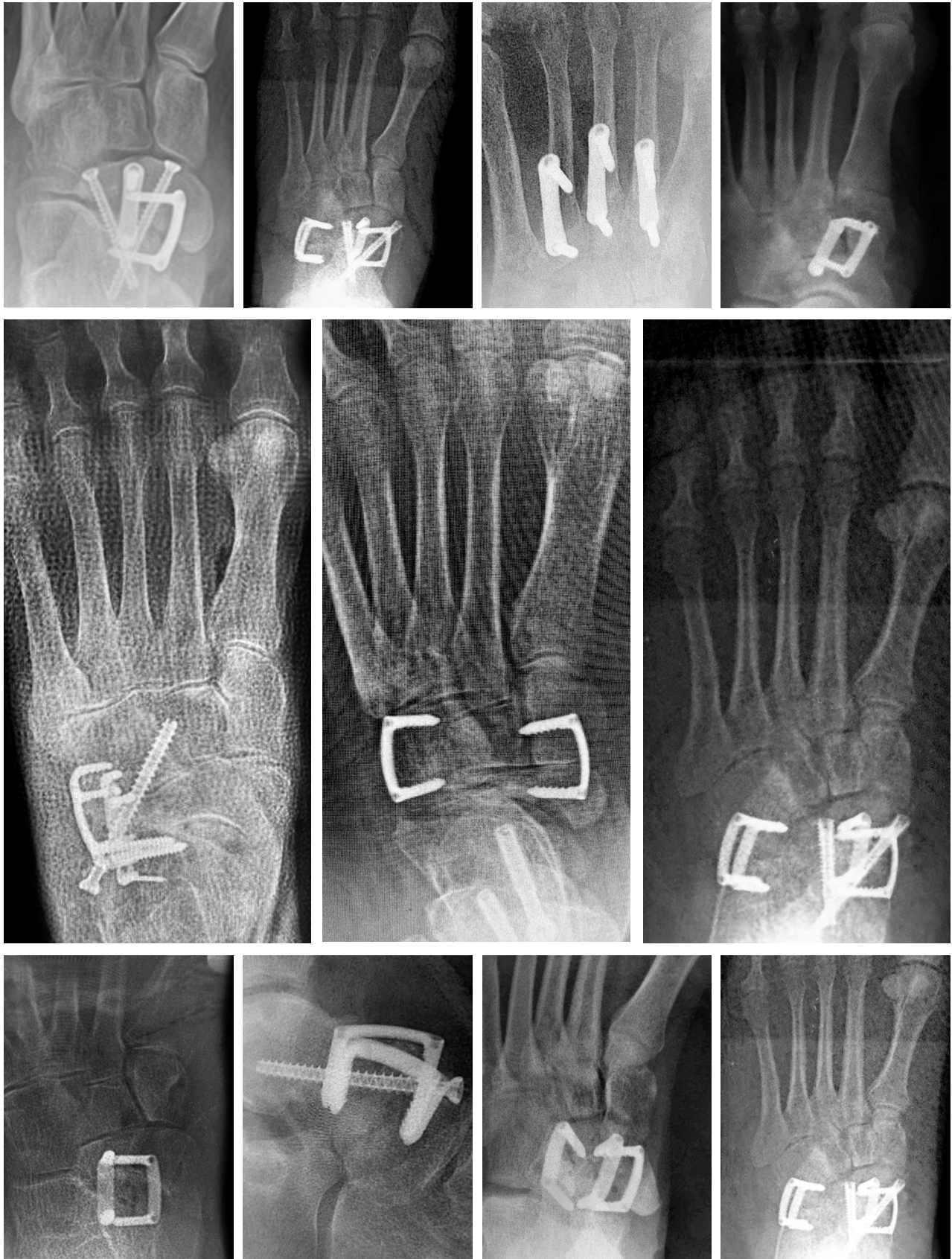
*Constructs shown are at surgeons' discretion

Multi-Joint Fusions



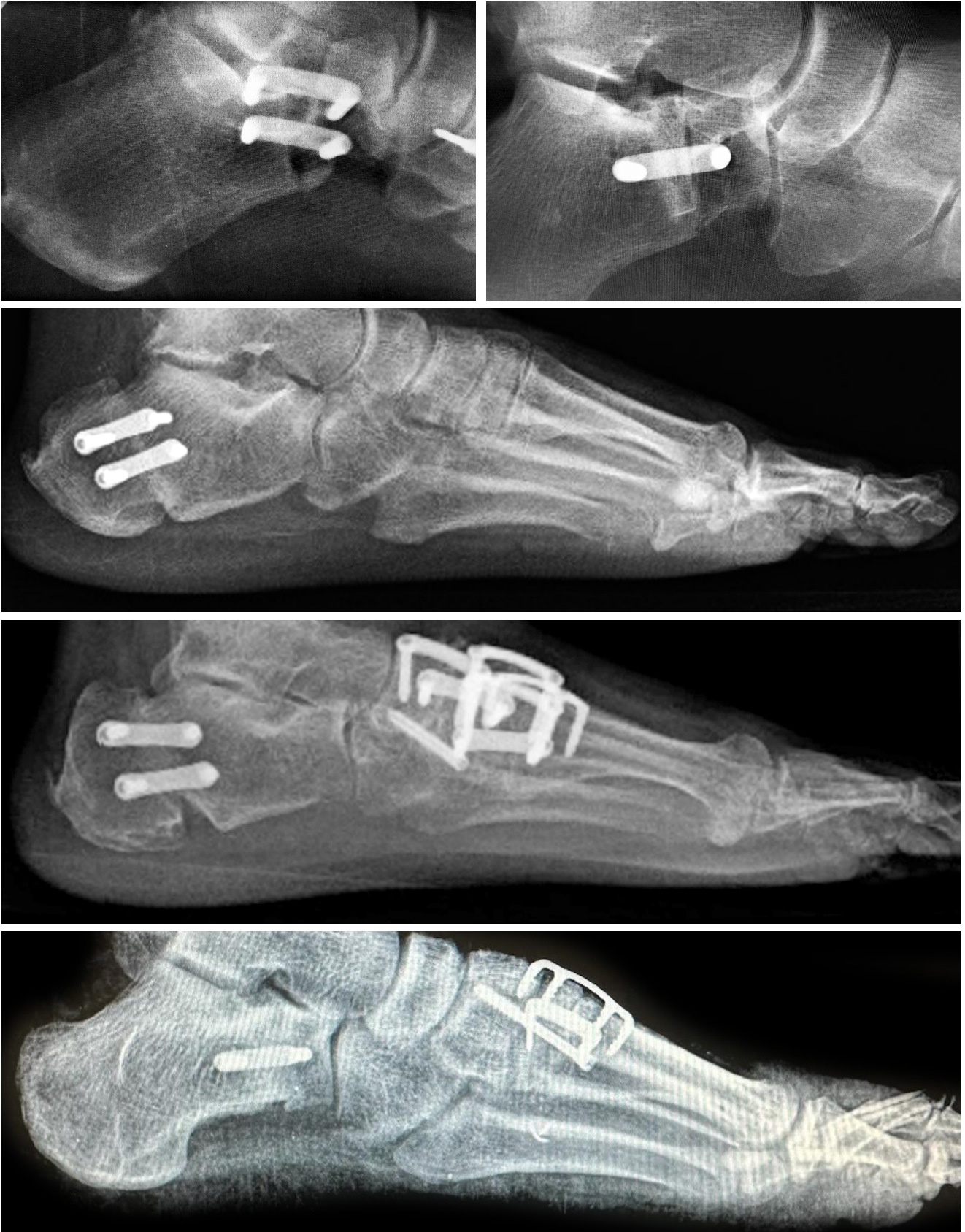
*Constructs shown are at surgeons' discretion

Midfoot/Hindfoot Fractures, Fusions and Osteotomies



*Constructs shown are at surgeons' discretion

Evans and Dwyer Osteotomies



*Constructs shown are at surgeons' discretion



Ordering Information

SK50 28x13x11mm SpeedPlate™ Anatomic Quad Rapid Compression Implant

SK51 18x14mm SpeedPlate™ Rapid Compression Implant

SK52 18x17mm SpeedPlate™ Rapid Compression Implant

SK53 28x17x14mm SpeedPlate™ Anatomic Quad Rapid Compression Implant

SK54 23x20mm SpeedPlate™ Rapid Compression Implant

Before use of the system, the surgeon should refer to the appropriate instructions for use and surgical technique for complete warnings, precautions, indications, contraindications, and adverse events. Risks include, but are not limited to: infection, pain, discomfort from the presence of the implant, loosening of the implant, and loss of correction with nonunion or malunion. If any of these occur, additional treatments may be needed. Additional information about risks, warnings, and instructions is available at Lapiplasty.com/surgeons/labeling.

To learn more, visit
Lapiplasty.com



TREACE
Medical Concepts, Inc.

1. For complete information see ASTM F136-13, Standard Specification for Wrought Titanium-6Aluminum-4Vanadium ELI (Extra Low Interstitial) Alloy for Surgical Implant Applications (UNS R56401)

Pat. treace.com/patents ©2024 Treace Medical Concepts, Inc. All rights reserved. M2880C