

Mini-Adductoplasty™

Minimally Invasive Midfoot Correction



Experience the Power of the Adductoplasty® System Through a 4cm Incision

TREACE
Medical Concepts, Inc.

Mini-Adductoplasty™

Minimally Invasive Midfoot Correction

- **Minimally Invasive System**

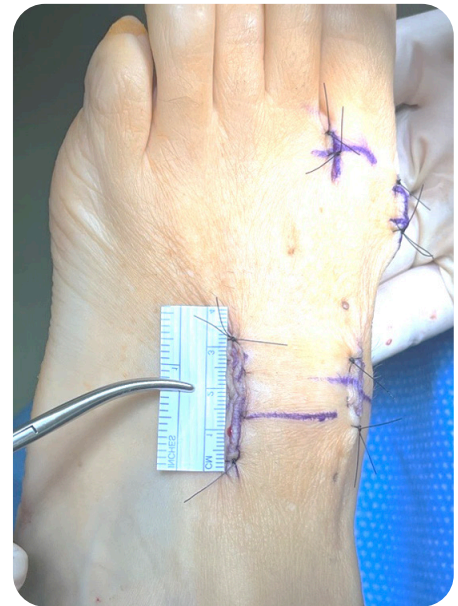
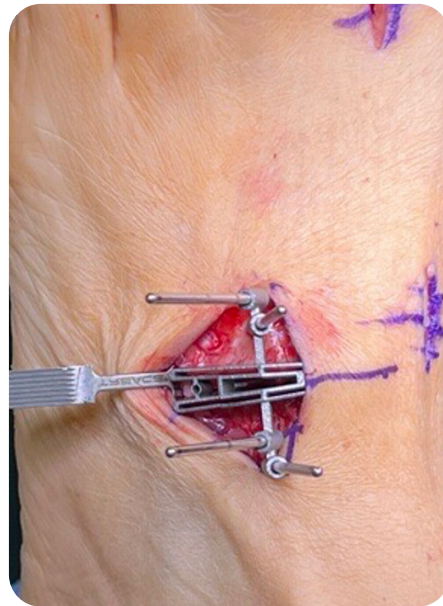
Technology enables procedural performance through a miniaturized incision

- **Familiar technique and philosophy**

Key steps and instrumented approach while maintaining tried-and-true Adductoplasty® surgical technique

- **New instruments designed for procedural efficiency**

Specialized Incision Guide and Cut Guide allow procedure to be performed through a 4cm incision



Before use of the system, the surgeon should refer to the appropriate instructions for use and surgical technique for complete warnings, precautions, indications, contraindications, and adverse events. Risks include, but are not limited to: infection, pain, discomfort from the presence of the implant, loosening of the implant, and loss of correction with nonunion or malunion. If any of these occur, additional treatments may be needed. Additional information about risks, warnings, and instructions is available at Lapiplasty.com/surgeons/labeling.

To learn more, visit
Adductoplasty.com



TREACE
Medical Concepts, Inc.